

**CACHE
ALUMNI**

POWERED BY NCFE

Advertising with CACHE Alumni

MEDIA PACK

2024



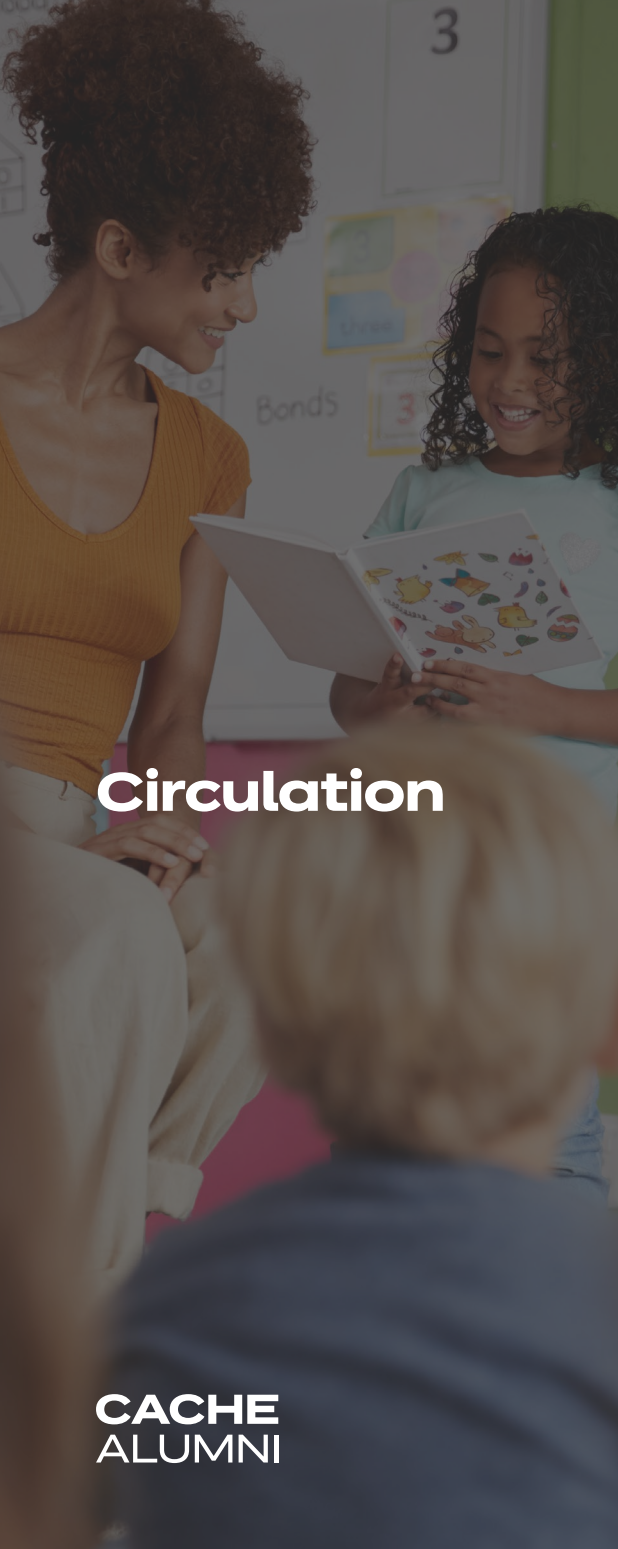


CACHE
ALUMNI

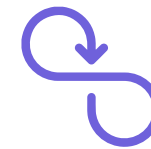
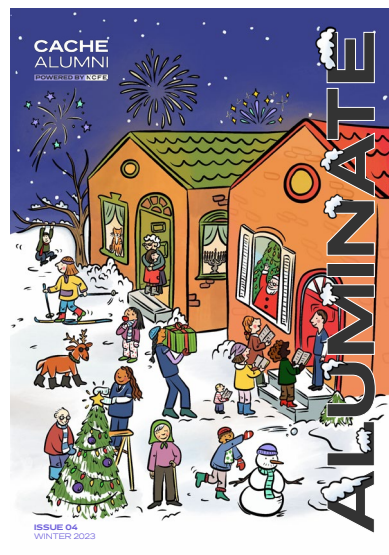
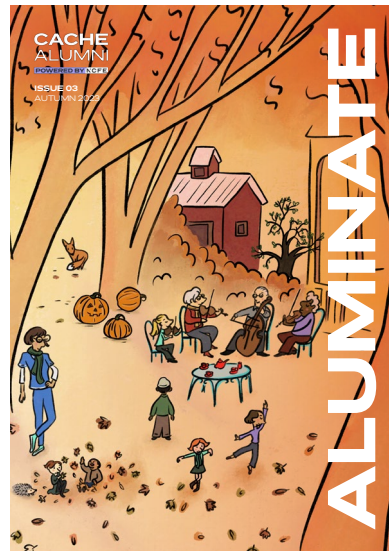
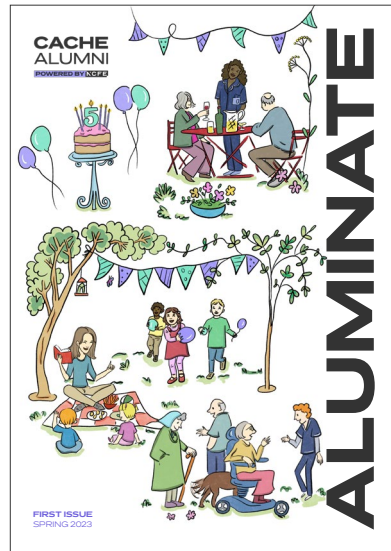
CACHE Alumni is an award-winning professional membership website supporting practitioners, learners, employers and educators throughout their learning and career journey.

Aluminate is our quarterly magazine available exclusively to members, featuring valuable insights, success stories, and industry updates. We have an exciting opportunity for you to put your organisation's products or services in front of an engaged audience who work within the care, health, early years and education sectors.

Advertising opportunities are also available within POD-CACHE, our regular members' podcast featuring interviews, discussions and best practice from across the caring sector.



Circulation



19,695

CACHE Alumni members are currently signed up to receive quarterly Aluminare magazine emails.

23.4%

of Aluminare emails are forwarded on (around 2800 unique forwards per send).

300

average monthly POD-CACHE listeners, with some listening multiple times.

Our members

90%

of CACHE Alumni members find our email communications to be useful or very useful.

93%

of CACHE Alumni members feel more equipped to perform their role because of resources available through CACHE Alumni.

87%

of CACHE Alumni members agree that their membership has helped them make the best decisions about their future progression.

Approximate breakdown of members by industry:

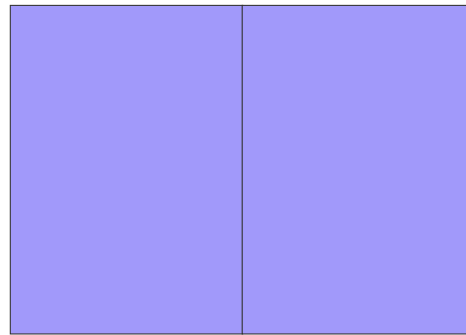
Sector	Members
Education	36%
Early Years	20%
Healthcare	14%
Community and Home Care	9%
Residential Care	6%
Other	15%



■ Education ■ Early Years
■ Healthcare
■ Community and Home Care
■ Residential Care ■ Other



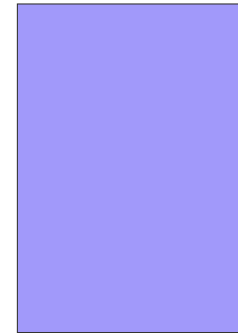
Advertisement slots available in Aluminate magazine



Double page spread

Specs

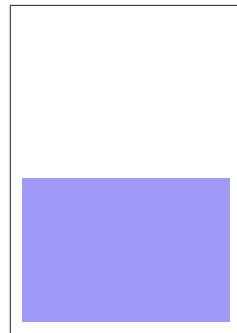
420 x 297mm | PDF



Full page

Specs

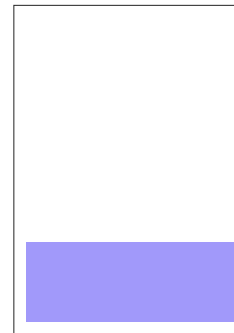
210 x 297mm | PDF



Half page

Specs

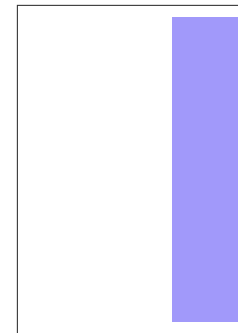
184 x 127mm | PDF



Quarter page

Specs

184 x 68mm | PDF



Strip

Specs

58 x 264mm | PDF

Pricing

Quarter page: £300 | Half page: £500 | Full page: £800



What your advert could look like

CACHE ALUMNI

CACHE ALUMNI

POWERED BY KCFE

Compassion in action: implementing trauma-informed approaches

Join us for a transformative event designed for professionals in care, health, early years and education. Discover the power of trauma-informed approaches and learn how they can revolutionise your practice.

Date: 28 February 2024

Where: online

Find out more

Full page

Specs

210 x 297mm | PDF

Strip

Specs

58 x 264mm | PDF

may impact recovery, is the biological model of addiction which may impact future abstinence and relapse.

The brain and the body are the mechanisms allowing humans to function (Pinel & Barnes, 2017). For most people in recovery, the effects of their drug use on the brain and the body are rarely considered; it is important to understand how these mechanisms are affected by acute drug use (Volkow et al., 2009).

The habit-forming rituals of taking illegal drugs will lead to changes in the brain leading to the drug's salience, neuroadaptation, with long term effects. The absorption of the drugs will lead to the brain reward centres being hijacked, leaving the brain unable to respond to normal stimuli in the same way before drugs were consumed (Volkow et al., 2009; Pinel & Barnes, 2017).

The role of the significant other

It is estimated that over one hundred million people have substance misuse and abuse addictions worldwide (Kourgiantakis & Ashcroft, 2018). The number of people affected by these addictions, including family members, friends, and anyone close to the individual with the addiction, odds significantly to those numbers (Kourgiantakis & Ashcroft, 2018).

The person who wants to stop their addiction may be apprehensive about

making the first step. The significant other may play an essential part in convincing an individual in addiction to seek treatment, encouraging them to enter treatment, enabling a positive approach to support the completion of treatment (McKay et al., 2009).

Kourgiantakis & Ashcroft's (2018) literature review mapped and categorised peer-reviewed studies relating to family interventions into substance addiction and gambling issues. Their method revealed that it is crucial to understand more about the criticality of support and what is needed for the significant other.

In the next issue of **Aluminate**, I will further explore the complex road to recovery, dual diagnosis and the critical support of the significant other.

References

Bradshaw, S., Shumway, S. T., Wang, E. W., Harris, K. S., Smith, D. B., & Austin-Robillard, H. (2019). Hope, readiness, and coping in family recovery from addiction. *Journal of Groups in Addiction & Recovery*, 10(4), 315-336.
Elli, A., & Dryden, W. (1987). *The practice of rational-emotive therapy (RET)*. New York: Springer.
Kourgiantakis, T., & Ashcroft, R. (2018). Family-focused practices in addiction: a scoping review protocol. *BMJ open*, 18(1), e019143.doi:10.1136/bmjopen-2017-019143.
McKay, J. R., Carise, D., Dennis, M. L., Dupont, R., Humphreys, K., Kame, J., & Schwarzkow, J. (2009). Extending the benefits of addiction treatment: Practical strategies for continuing care and recovery. *Journal of Substance Abuse Treatment*.
[Cache for National Statistics - Profiles related to drug poisoning in England and Wales, 2000 registrations](#)
Pinel, J. P., & Barnes, S. (2017). *Biopsychology*. Pearson Higher Ed. Harlow, United Kingdom.
Singleton, N., Murray, R., & Trisley, L. (Eds.). (2006). *Measuring different aspects of problem drug use: methodological developments*. London: Home Office.
Volkow, N. D., Fowler, J. S., Wang, G. J., Blaser, R., & Telang, F. (2008). Imaging dopamine's role in drug abuse and addiction. *Neuropharmacology*, 56, 3-8.
World Health Organization. (1989). *The ICD-10 classification of mental and behavioural disorders: clinical descriptions and diagnostic guidelines*. World Health Organization.



POD-CACHE

Join the CACHE team as they interview people from across the caring sector.

An award-winning podcast for everyone, from the specialists in care, health, childcare and education.

Listen now



What your advert could look like

CACHE ALUMNI

CACHE ALUMNI
POWERED BY NCFE

Learning Excellence Awards

We are excited to announce CACHE Alumni as a finalist in the 2024 Learning Excellence Awards, after winning with POD-CACHE in 2023. Thanks to all of our amazing members for making the network what it is.

Wish us luck and stay tuned to see how we do!

CACHE ALUMNI
POWERED BY NCFE

Momentum: mastering mid-year goal setting for practitioners

Goal setting and planning techniques to help you ignite your passion and follow your success in the care, health, early years, and education sectors.

Date: May/June 2024 Where: online

[Find out more](#)

ALUMINATE WINTER 23 | 27

Half page

Specs

184 x 127mm | PDF

energy consumption and increased greenhouse gas emissions, chemical pollution and contamination, landfill growth / increased non-recyclable waste, limited preserved and protected habitats, unrestrained urbanisation, climate change, primary and secondary forest loss, etc.

Animal health challenges include but not limited to changing animal migratory patterns, wildlife depletion and extinction, poor biosecurity, uncontrolled non-native species into new ecosystems, irresponsible pet ownership and care, shrinking wildlife corridors, poor conditions and standards of animal welfare and protection, intensified aquaculture/livestock and wildlife farming systems, disease emergence and pathogen spillover, etc.

The Covid-19 experience has identified the importance of collaboration across nations and continents to reduce risks of future epidemics and pandemics, while also addressing ongoing issues and burdens endemic and non-communicable diseases.

The UK is one of the countries that are taking actions and making policy in alignment with the One Health approach. We can therefore see the

importance of a unified health but global health, and not just for humans but also for animals and the environment, as all three of these are interconnected.

Any successful public health intervention will require cooperation and unification, working with human, animal, and environmental health professionals. While it is recognised that these three areas are of major importance, it must also be remembered that there are other relevant and important people in the One Health approach, including law enforcement, agriculture, policymakers, communities, educators and even pet owners. No one person, sector or organisation can address impacting issues at the human-animal-environment interface alone.

Further reading
[UK Declaration - Public health and climate change: a One Health approach, July 2023](#)
[World Health Organisation \(WHO\) - The One Health approach and Key Recommendations of the Quadripartite, June 2023](#)

Climate change is currently influencing human and animal migration, the increase in extreme weather events, and pollution. There has also been

Further reading
[UK Declaration - Public health and climate change: a One Health approach, July 2023](#)
[World Health Organisation \(WHO\) - The One Health approach and Key Recommendations of the Quadripartite, June 2023](#)

Create your own career pathway with Skillzminer

With automated skills analysis, access to **over 200,000 vacancies** across the UK, live labour market information and a powerful engine, Skillzminer has everything you need to get started in the right direction!

Start your career journey today.

[Find out more](#)

ALUMINATE WINTER 23 | 43

Quarter page

Specs

184 x 68mm | PDF

Got something to advertise?

We'd love to chat more about how your organisation could advertise within CACHE Alumni's Aluminate magazine or POD-CACHE.

Email markmcdonagh@ncfe.org.uk to get started.